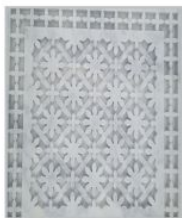




3-AXIS INTERPOLATED CNC STONE ENGRAVING MACHINES



SHUSA
DB 2500S



SHUSA
DB 2500S-II

SPECIFICATIONS

ITEM	SHUSA DB2500S	SHUSA DB2500S-II (Double Spindle)
Working table size(mm)	2576 X 1400 mm	2576 X 1400 mm
Max engraving size(mm)	2500 X 1300 mm	2500 X 1300 mm
Vertical movement	250 mm	250 mm
Max moving speed(mm/min)	30000 mm/min	30000 mm/min
Manner of receiving data	USB	USB
Control system	NC Studio - Remote	NC Studio - Remote
Memory(MB)	2 GB	2 GB
Spindle power(HP)	7.4 HP	7.4 HP
Max spindle speed(rpm)	24000 rpm	24000 rpm
Cutter Diameter(mm)	1mm - 16mm	1mm - 16mm
Power(kw)	9 KW	9 KW
Machine size(mm)	3080 x 1990 x 1440	3080 x 1990 x 1440
Cooling System	Circulation Water	Circulation Water
Gross Weight (kg.)	1600 Kg.	1600 Kg.

STANDARD FEATURES:

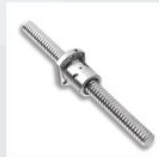
1. Linear Motion System:

- Recirculating LM guides are used for quicker response and to ensure excellent positioning accuracy.
- LM guide ways are employed on all axes. They are designed to support intensive working conditions and providing the machine with maximum stability and precision.



2. Recirculating Ball Screw:

- Z axis of machine use high precision ball screws to ensure consistent accuracy over the life of the machine.
- Direct drive coupling system provides lossless transmission and assists high speed motion.



3. High Accuracy Micro Stepper / Servo Motor & Drives:

- All the Axis fully equipped with high performance micro stepper/servo drives & motors giving superior motion control and stiffness at higher speeds.



4. Automatic Lubrication system:

- To ensure long life of rack, pinion, ball screw & Linear Motion Guide ways automatic lubrication system is provided.



5. Precise Rack & Pinion:

- Heavy duty Rack & pinion mechanism carries whole load of machine which is able to carry high cutting torque & cutting load to ensure better accuracy over the span.



6. Fully Enclosed Bellow Guarding:

- Fully cover waterproof bellow cover protect LM guide & Rack pinion from dust, water & foreign particles which improves accuracy & life of machine.



7. Portable Control Unit:

- A portable & handy controller is easy to operate. A fully featured portable & handy controller allows the operator to easily undertake work piece setup.
 - Z Axis tool point setter
 - Multiple job set
 - Able to save point
 - Program save at power cut off
 - Ease in transferring program



SHUSA

MISSION

Our Mission is to provide efficient quality engineering services with our existing technical know-how as well as human capital and thereby understand, satisfy & commemorate our customers.

VISION

Our Vision urges us towards implementing our research and innovation in a delighting our present patrons and prospective clients. In coming times, Shusa Mechatronics is all set to achieve new milestones in customer services and developing technologically competent products in the mechanical field.

QUALITY POLICY

We at Shusa believe in Total Quality. Quality is not just a benchmark, it's an ongoing process of thriving for excellence and we have inculcated the steps to achieve best quality in our services and products. Our policy is to produce cost-effective, timely and customer delighting solutions.

APPLICATION:





Born in 2003 **SHUSA MECHATRONICS PRIVATE LIMITED** is today well established group made its mark in the field of 5 Axis and 3 Axis Stone & Wood Engraving machine as well as for Design, Development and Manufacturing of Machine tool & Precision Engineering Components.

Started as Engineering company, Shusa Mechatronics Pvt. Ltd is a now a name for small and large Indian company as well as foreign company for Carving CNC machine solutions, designing and manufacturing solutions.

With our highly educated Techno-commercial management and strongly motivated team of skilled professionals, we always endeavor our best to provide everlasting value to our customers.

We always looking towards new technology with highly efficient machinery as well as measuring or calibrating facility to provide true satisfaction to our customer to increase their efficiency and profitability.



MECHATRONICS PVT. LTD.

Gujarat Small Industrial Compound,
B/h. Bank of Baroda, B/s. Uttam Dairy,
Rakhial, Ahmedabad-380 021, Gujarat, INDIA.

P : +91 - 079 - 2277 1005

M : +91 - 9998 950 933

+91 - 9998 950 929

E : info@shusacnc.com

W : www.shusacnc.com