



3-AXIS INTERPOLATED CNC STONE ENGRAVING MACHINES



SHUSA
DB 2500K



SHUSA
DB 2500S-D

SPECIFICATIONS

ITEM	SHUSA DB2500D	SHUSA DB2500K
Working table size(mm)	1570 X 2950 mm	1400 X 2576 mm
Max engraving size(mm)	1350 X 2500 mm	1300 X 2500 mm
Vertical movement	150 mm	250 mm
Max moving speed(mm/min)	25000 mm	30000 mm/min
Manner of receiving data	USB	USB
Control system	DSP Control	DSP Control
Spindle power(HP)	4.3 HP	7.4 HP
Max spindle speed(rpm)	24000	24000 rpm
Cutter Diameter(mm)	1mm - 12mm	1mm - 16mm
Power(kw)	5.5 KW	9 KW
Machine size(mm)	3080 x 1990 x 1440	3080 x 1990 x 1440
Cooling System	Water Circulation	Water Circulation
Gross Weight (kg.)	1000 Kg.	1500 Kg.

STANDARD FEATURES:

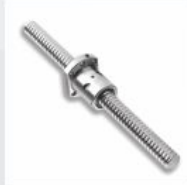
1. Linear Motion System:

- Recirculating LM guides are used for quicker response and to ensure excellent positioning accuracy.
- LM guide ways are employed on all axes. They are designed to support intensive working conditions and providing the machine with maximum stability and precision.



2. Recirculating Ball Screw:

- Z axis of machine use high precision ball screws to ensure consistent accuracy over the life of the machine.
- Direct drive coupling system provides lossless transmission and assists high speed motion.



3. High Accuracy Micro Stepper / Servo Motor & Drives:

- All the Axis fully equipped with high performance micro stepper/servo drives & motors giving superior motion control and stiffness at higher speeds.



4. Automatic Lubrication system:

- To ensure long life of rack, pinion, ball screw & Linear Motion Guide ways automatic lubrication system is provided.



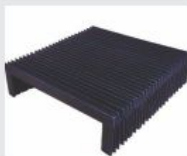
5. Precise Rack & Pinion:

- Heavy duty Rack & pinion mechanism carries whole load of machine which is able to carry high cutting torque & cutting load to ensure better accuracy over the span.



6. Fully Enclosed Bellow Guarding:

- Fully cover waterproof bellow cover protect LM guide & Rack pinion from dust, water & foreign particles which improves accuracy & life of machine.



7. Portable Control Unit:

- A portable & handy controller is easy to operate. A fully featured portable & handy controller allows the operator to easily undertake work piece setup.
 - Z Axis tool point setter
 - Multiple job set
 - Able to save point
 - Program save at power cut off
 - Ease in transferring program



MISSION

Our Mission is to provide efficient quality engineering services with our existing technical know-how as well as human capital and thereby understand, satisfy & commemorate our customers.

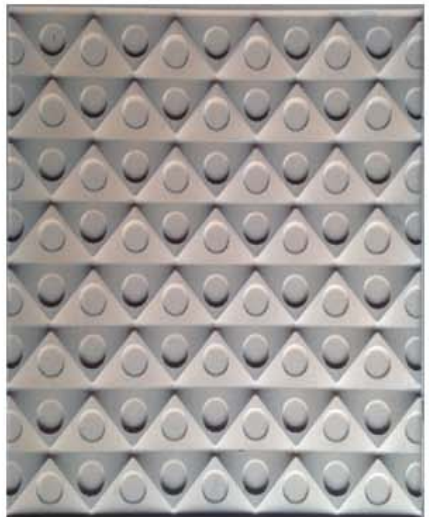
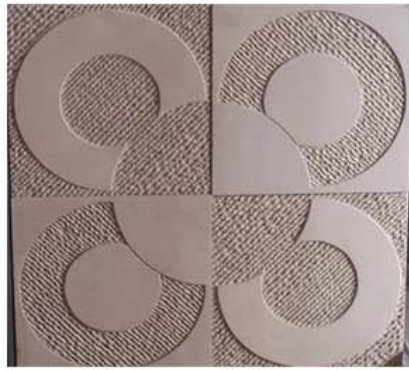
VISION

Our Vision urges us towards implementing our research and innovation in a delighting our present patrons and prospective clients. In coming times, Shusa Mechatronics is all set to achieve new milestones in customer services and developing technologically competent products in the mechanical field.

QUALITY POLICY

We at Shusa believe in Total Quality. Quality is not just a benchmark, it's an ongoing process of thriving for excellence and we have inculcated the steps to achieve best quality in our services and products. Our policy is to produce cost-effective, timely and customer delighting solutions.

APPLICATIONS:





Born in 2003 SHUSA MECHATRONICS PRIVATE LIMITED is today well established group made its mark in the field of 5 Axis and 3 Axis Stone & Wood Engraving machine as well as for Design, Development and Manufacturing of Machine tool & Precision Engineering Components.

Started as Engineering company, Shusa Mechatronics Pvt. Ltd is a now a name for small and large Indian company as well as foreign company for Carving CNC machine solutions, designing and manufacturing solutions.

With our highly educated Techno-commercial management and strongly motivated team of skilled professionals, we always endeavor our best to provide everlasting value to our customers.

We always looking towards new technology with highly efficient machinery as well as measuring or calibrating facility to provide true satisfaction to our customer to increase their efficiency and profitability.



MECHATRONICS PVT. LTD.

Gujarat Small Industrial Compound,
B/h. Bank of Baroda, B/s. Uttam Dairy,
Rakhial, Ahmedabad-380 021, Gujarat, INDIA.

P : +91 - 079 - 2277 1005
M : +91 - 9998 950 933
+91 - 9998 950 929
E : info@shusacnc.com
W : www.shusacnc.com